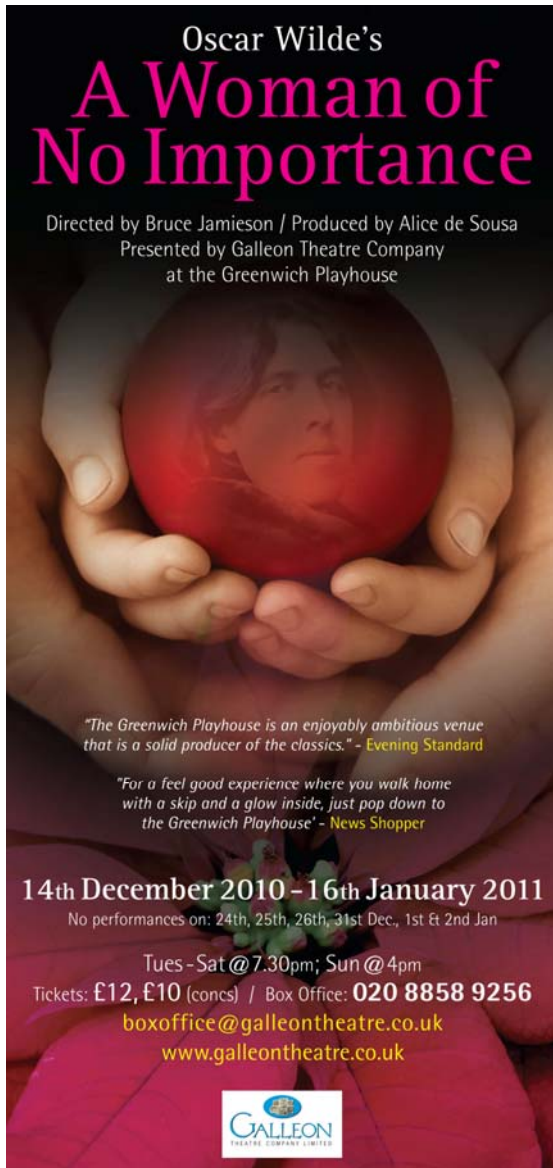


## PRESS RELEASE



### **A WOMAN OF NO IMPORTANCE**

By Oscar Wilde

Directed by **Bruce Jamieson**

Produced by **Alice de Sousa**

Presented by **Galleon Theatre Co. Ltd**

#### **DATES:**

**14<sup>th</sup> December 2010 – 16<sup>th</sup> January 2011**

(No Performances on:

**24<sup>th</sup>, 25<sup>th</sup>, 26<sup>th</sup>, 31<sup>st</sup> Dec., 1<sup>st</sup> & 2<sup>nd</sup> Jan 2010)**

**Tues-Sat @ 7.30pm - Sun @ 4pm**

#### **PRESS NIGHT:**

**Thursday, 16<sup>th</sup> December 2010 @ 7.30pm**

**Tickets:** **£12, £10 (concs.)**

**Box Office:** **020 8858 9256**

**boxoffice@galleontheatre.co.uk**

#### **VENUE: GREENWICH PLAYHOUSE**

**Greenwich Station Forecourt**

**189 Greenwich High Road LONDON SE10 8JA**

**'The Greenwich Playhouse is an enjoyably ambitious venue and is a solid producer of classics' – Evening Standard**

**At the close of its twentieth year of presenting internationally acclaimed theatre, **Galleon Theatre Company** is delighted to announce that it will next stage **Oscar Wilde's** comedy drama - **A Woman of No Importance.****

In **A Woman of No Importance**, **Wilde** attacks the hypocrisy of a society which scorns and punishes women for their sexual misdemeanours but applauds men for theirs. The play centres on the publically damning revelation of Mrs. Arbutnot's long-concealed secret (she conceived a child out of wedlock) and on her struggle to survive in a social order which values image above integrity. **Wilde's** piercing satire exposes the duplicity of a culture which ostracises a woman for the consequences of an ill-advised sexual relationship but grants honours to the man in question.

**Galleon's** production of **A Woman of No Importance** is set at the end of the 1950's and at Christmas - a time when situations often, unpredictably unravel. The 1950's was a decade largely characterised by America's muscular assertion of its political, cultural, economic, and militarily Super Power status. As the West assimilated US political and economic ideological thinking and as the consumer age became a social reality, a youth culture began to emerge and to express itself through distinctive views, fashion and music.

**"The Greenwich Playhouse really is producing the very best theatre in London."- Remotegoat \*\*\*\*\***

By setting the production in late 1950's, **Galleon** positions **Wilde's** plot and its characters within a specific national socio-historical context. As men went away to fight, women stepped into male jobs and relished in their newly found powers and freedoms. At that time, a single mother like Mrs. Arbuthnot would not have been a social oddity. Once men returned from War to traditional roles in society and in the family, women reverted to domesticity, and Victorian morality and gender expectations were once again re-affirmed as the desired norm. Suddenly, a woman with a past like Mrs. Arbuthnot would have found herself socially ostracised.

Britain in the late 50's was still a heavily class structured society where the new US driven youth culture struggled to take hold. Consequently, Hester, the young idealistic, American woman of **Wilde's** play, would have been regarded as unusual. For our purposes, she also symbolises the impending infiltration of American culture and the imminent socio-cultural revolution of the 1960's which changed the world and our thinking forever.

**"This studio-sized venue has been put on the cultural map with productions of epic quality." – South London Press**

By transposing **Wilde's** brilliantly sharp and pertinent comedy drama to a Christmas party at the end of the 1950's **Galleon Theatre Company** carefully pushes **Wilde's** fantastic play into an age and time closer to our own. Further, Bruce Jamieson's thoughtful and intelligent realignment of **Wilde's** problematic Act Four, with its crushing Victorian morality and religiosity (a source of frequent critical criticism in more recent productions), heightens our empathy with the character's predicaments and ensures for a compelling conclusion to **Wilde's** wonderful play.

***A Woman of No Importance* is creatively spearheaded by a very experienced and acclaimed director - Bruce Jamieson and by Alice de Sousa, a multi-award winning producer.**

**The Director - BRUCE JAMIESON** is a co-founding member of the **Greenwich Playhouse, Galleon Theatre Company** and **Galleon Films**. He has directed nearly thirty previous **Galleon** productions and played leading roles in some sixty stage plays. As an actor, his television and film credits include *The Oxford Murders*; *Murphy's Law* (Tiger Aspect); *Monarch of the Glen* (Ecosse); *Ali G-Inda House* (Universal); *Roughnecks* (BBC); *In Suspicious Circumstances* (Granada); *Crime Solver* (BBC); and *Spongebob* (BBC).

**The Producer - ALICE DE SOUSA** - is multi-award winning writer, producer and actress. She has created over seventy stage productions; played leading roles in some thirty theatre plays; written many highly acclaimed stage and screen scripts; won in 2009 two awards including the Portuguese government's '*Premio de Talento*' in recognition of her 25 year career. In 2005 the American Biographical Institute awarded her with '*Great Women of the 21<sup>st</sup> Century*' and '*Woman of the Year 2005*'. (These awards exclusively recognise the impact on society of the work of 1000 prolific women worldwide).

**"The Greenwich Playhouse may be small physically, but as the saying goes, good things come in small packages." - British Theatre Guide**

➤ [Galleon Theatre Company has been staging critically acclaimed theatre for two decades. Recent productions of the classics include:](#)

➤ [THE IMPORTANCE OF BEING EARNEST by Oscar Wilde](#)

"Rarely have I left a theatre happier than I left the Greenwich Playhouse. The Importance of Being Earnest is great fun from start to dancing finish." - [Dockland's News](#)

"The Galleon Theatre Company's production at Greenwich Playhouse proves the comic play has lost none of its edge and is just as hilarious today as it was more than a century ago. " - [News Shopper \\*\\*\\*\\*](#)

"With material as brilliant as this, it's quite difficult to produce a really terrible Earnest and in the capable hands of Galleon Theatre Company that's hardly likely to happen." - [The Stage](#)

"Oscar Wilde's delightful script is laden with witticisms, clever observations and delicious farce. And this production does it justice, thanks to superb direction and quite brilliant performances." - [Dockland's News](#)

"The players were moved around the stage expertly by Bruce Jamieson, who manoeuvred the territories and egos of his characters like a masterful game of chess. Every crevice of space was made use of, and Jamieson's concept allowed for the brilliance of Wilde's narrative to shine, without compromise." - [Remotegoat \\*\\*\\*\\*\\*](#)

"This is a fitting tribute to Wilde's most popular play. Go and see it and I defy you not to leave with a beaming smile" - [Dockland's News](#)

➤ ['THE CHERRY ORCHARD' by Anton Chekhov](#)

"2010 is a big year: the Greenwich Playhouse turns fifteen, the Galleon Theatre Company turns twenty and it is 150 years since Anton Chekhov was born. What better way to celebrate this triad of anniversaries than in this glorious staging of *The Cherry Orchard*? " - [British Theatre Guide](#)

"Greenwich Playhouse is known for successfully pulling off some epic plays in the past and its latest offering is no exception." - [Kentish Times](#)

"Essential when producing Chekhov is to really give the audience a key glimpse into the unspoken world behind the words and Alice de Sousa has created this for us with her production." - [Theatre World Internet Magazine](#)

"Bruce Jamieson does something very special with this production." - [Remotegoat \\*\\*\\*\\*](#)

"An evocative and thought provoking production... Well done Galleon." - [Theatre World Internet Magazine](#)

➤ ['A DOLL'S HOUSE' by Henrik Ibsen](#)

"In this insightful production, Bruce Jamieson's revival of the Ibsen play, despite its 19<sup>th</sup> Century setting always seems startlingly modern." - [The Guardian](#)

"This excellent production benefits from expert steerage from director Bruce Jamieson and producer Alice de Sousa. Highly recommended." - [Theatre World Internet Magazine](#)

"If this were a Hollywood movie, we'd be cheering - and not just because the oppressed stands up to the oppressor." - [Time Out](#)

➤ [ABSENT FRIENDS by Alan Ayckbourn](#)

"Directed at a cracking, heartless pace by Bruce Jamieson, the cast of six revel in the cringe worthiness of the parts they play and make us revel with them" - [The Stage](#)

"Blackly-comic statements leave the audience in fits of laughter." - [Kentish Times](#)

"Bruce Jamieson has won performances from the cast that succeed in combining parody with credibility." - [What's On In London](#)

➤ [For further information contact the Galleon Theatre Company on 020 8310 7276; the producer on 07957 548010 or \[alice@galleontheatre.co.uk\]\(mailto:alice@galleontheatre.co.uk\)](#)

➤ [Please consult our website on \[www.galleontheatre.co.uk\]\(http://www.galleontheatre.co.uk\)](#)